

FLEXCUBE UBS Oracle GL EJB Adapter Installation
Oracle FLEXCUBE Universal Banking
Release 12.87.06.0.0
[May] [2020]



Table of Contents

1. INSTALLATION STEPS 3

1.1 PREREQUISITE 3

1.2 STEPS 3

1. Installation Steps

1.1 Prerequisite

- ✓ Ensure that the basic KERNEL Oracle GL Adapter Environment Setup is done.

[Please refer [ADOGL_Installation.doc.](#)]

1.2 Steps

A. Configure FLEXCUBE UBS Oracle GL EJB Adapter Properties

Edit `<KERNEL_INSTALL_DIR>/ADOGL_EJB/config/ADOGL_EJB_Prop.properties` file to give appropriate values for the properties as described below,

1. DTD_PATH: This property specifies the path where the GLHANDOFF.DTD is stored.

e.g. DTD_PATH=<KERNEL_INSTALL_DIR>/ADOGL_EJB/DTD/

[NOTE: Give DTD file path with forward slash (/) as file separator and remember to give a slash at the end.]

2. OGL_ADAPTER_DTD: This property specifies the name of the DTD against which incoming OGL request are validated against.

e.g. OGL_ADAPTER_DTD=GLHANDOFF.DTD

3. XSL_PATH: This property specifies the path where the OGL_ADAPTER_XSL.xsl is stored.

e.g. XSL_PATH=<KERNEL_INSTALL_DIR>/ADOGL_EJB/XSL/

[NOTE: Give XSL file path with forward slash (/) as file separator and remember to give a slash at the end.]

4. OGL_ADAPTER_XSL: This property specifies the name of the DTD against which incoming OGL request are validated against.

e.g. OGL_ADAPTER_XSL=OGL_ADAPTER_XSL.xsl

5. ADOGL_EJB_JMS_QCF: This property is the Queue Connection Factory name.

e.g. ADOGL_EJB_JMS_QCF=MDBQCF

6. ADOGL_EJB_JMS_QUEUE_NAME: This property is the Queue name.

e.g. ADOGL_EJB_JMS_QUEUE_NAME=MDB_QUEUE

7. LOGGER_PATH: This property specifies the path of the logger property file. This file can be found at <KERNEL_INSTALL_DIR>/ADOGL_EJB/config.

[NOTE: Give the logger path with forward slash(/).]

The ADOGL_EJB_Prop.properties will look similar as follows,

```
DTD_PATH=D:/Kernel7.2/ADOGL_EJB/DTD/
```

```
OGL_ADAPTER_DTD=GLHANDOFF.DTD
```

```
XSL_PATH=D:/Kernel7.2/ADOGL_EJB/XSL/
```

```
OGL_ADAPTER_XSL=OGL_ADAPTER_XSL.xsl
```

```
ADOGL_EJB_JMS_QCF=MDBQCF
```

```
ADOGL_EJB_JMS_QUEUE_NAME=MDB_QUEUE
```

```
LOGGER_PATH=D:/Kernel7.2/GW_EJB/config/adogl_ejb_logger.cfg
```

B. Configure logger parameters

Edit <KERNEL_INSTALL_DIR>/ADOGL_EJB/config/adogl_ejb_logger.cfg file to change the value of the property “AD.LOGGER.FPATH” to <KERNEL_INSTALL_DIR>/ADOGL_EJB/log/.

e.g. If the value of your <KERNEL_INSTALL_DIR> is D:/Kernel7.2, then the entry for this property will be,

AD.LOGGER.FPATH=D:/Kernel7.2/ADOGL_EJB/log/

[NOTE: Give AD.LOGGER.FPATH with forward slash (/) as file separator and remember to give a slash (/) at the end.]

C. Run the build file

✓ For WINDOWS

- Go to the folder <KERNEL_INSTALL_DIR>\setup in the command prompt, type “**set_env**” and press enter.
- Change directory to <KERNEL_INSTALL_DIR>\ADOGL_EJB\setup\WAS in the command prompt, type “**ws_ant**” and press enter.

✓ For UNIX

- Go to the folder <KERNEL_INSTALL_DIR>/setup in the shell prompt, type “**set_env.sh**” and press enter.
- Change directory to <KERNEL_INSTALL_DIR>/ADOGL_EJB/setup/WAS in the shell prompt, type “**ws_ant**” and press enter.

[NOTE: Please make sure that you get a message BUILD SUCCESSFUL after compilation.]

D. Deploy ADOGL EJB in WebSphere Application Server (WAS)

1. Stop the application server.

If the application server is already running, then stop the application server as follows:

✓ For Windows

- Go to the <APP_SERVER_HOME>/bin directory in the command prompt, type **stopServer.bat server1** and press enter.

2. Start the application server.

✓ For Windows

- Go to the <APP_SERVER_HOME>/bin .i.e the application server installation directory in the command prompt, type **startServer.bat server1** and press enter.
- This will start the server. Ensure that you get no error during start up. If the server start up is proper we shall get the following screen.

```
C:\Program Files\IBM\WebSphere\AppServer\bin>startServer.bat server1
ADMU0116I: Tool information is being logged in file C:\Program
Files\IBM\WebSphere\AppServer\profiles\default\logs\server1\startServer.log
ADMU0128I: Starting tool with the default profile
ADMU3100I: Reading configuration for server: server1
ADMU3200I: Server launched. Waiting for initialization status.
ADMU3000I: Server server1 open for e-business; process id is 1852
```

3. Open the administrative console of the application server

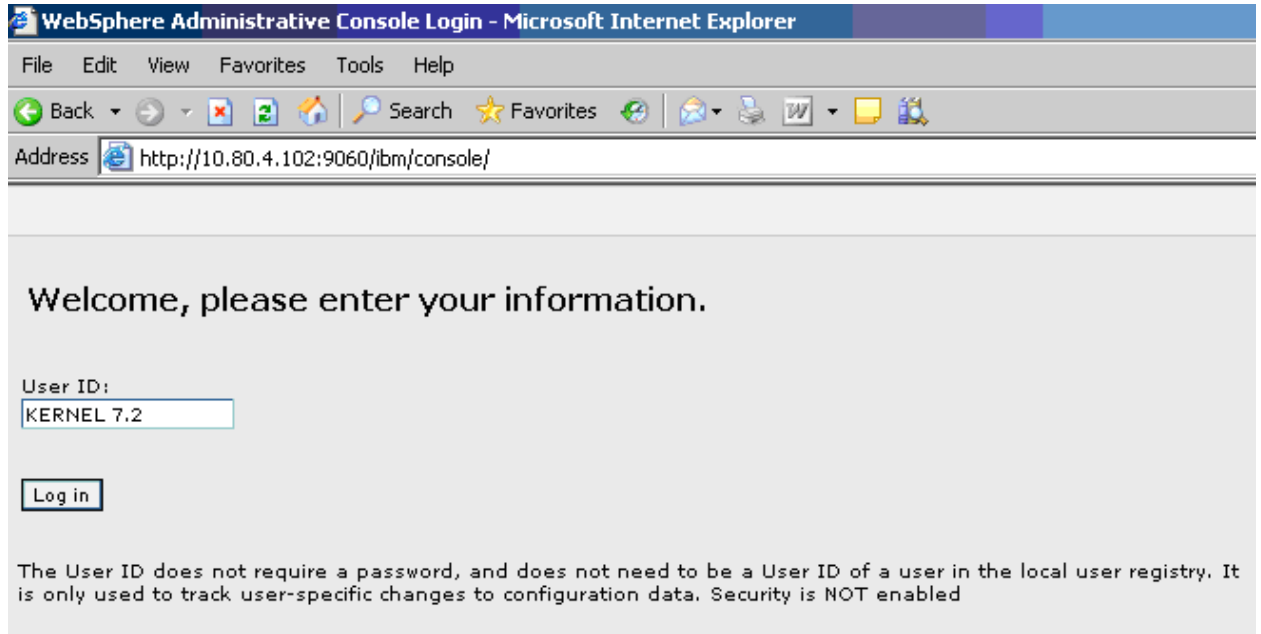
- ✓ Open an internet browser and type the WAS Admin Console URL Address of the server.

e.g. <http://10.80.4.102:9060/ibm/console>

where, 10.80.4.102 is the machine IP Address on which WAS is running.

- ✓ Enter a user id for launching the WAS Admin Console window.

The user id can be any name e.g.: KERNEL 7.2



4. Create an XA QueueConnectionFactory with the name MDBQCF

[Refer: [WAS_ADOGL_WebSphereMQ_Installation.doc](#)]

5. Create Websphere MQ Queue Destinations with the following names

- a. MDB_QUEUE

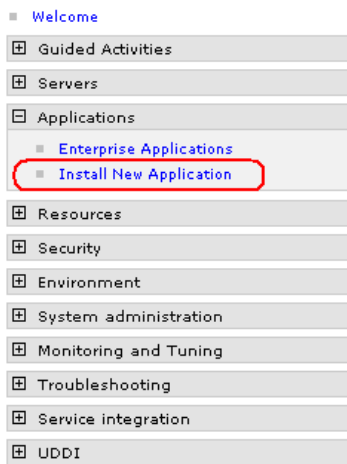
[Refer: [WAS_ADOGL_WebSphereMQ_Installation.doc](#)]

6. Deploying ADOGL_EJB_FACADE_Bean.ear

✓ Click on **Applications -> Install New Application**.

✓ Following screen will be displayed. Specify the local path of the enterprise archive file

(i.e. <KERNEL_INSTALL_DIR>/ADOGL_EJB/build/ADOGL_EJB_FACADE_Bean.ear) and click on Next.



Enterprise Applications

Preparing for the application installation

Specify the EAR, WAR or JAR module to upload and install.

Path to the new application.

☒ Local file system

Specify path
D:\Kernel7.2Lot1\ADOGI Browse...

☐ Remote file system

Specify path
Browse...

Context root
Used only for standalone Web modules (.war files)

Next Cancel

7. Following screen will be displayed. Click on Next.

Enterprise Applications

Close

Preparing for the application installation

Choose to generate default bindings and mappings.

☐ Generate Default Bindings

Prefixes:

☒ Do not specify unique prefix for beans

☐ Specify Prefix:

Prefix
ejb

Override:

☒ Do not override existing bindings

☐ Override existing bindings

Specific bindings file
Browse...

Previous Next Cancel

8. Following screen will be displayed. Click on Next.

Install New Application

Specify options for installing enterprise applications and modules.

→ **Step 1: Select installation options**

[Step 2](#) Map modules to servers

[Step 3](#) Provide options to perform the EJB Deploy

★ [Step 4](#) Provide JNDI Names for Beans

★ [Step 5](#) Map resource references to resources

★ [Step 6](#) Map resource env entry references to resources

[Step 7](#) Ensure all unprotected 2.x methods have the correct level of protection

[Step 8](#) Summary

Select installation options

Specify the various options that are available to prepare and install your application.

☐ Pre-compile JSP

Directory to install application

☒ Distribute application

☐ Use Binary Configuration

☒ Deploy enterprise beans

Application name

☒ Create MBeans for resources

☐ Enable class reloading

Reload interval in seconds

☐ Deploy Web services

Validate Input off/warn/fail

☐ Process embedded configuration

Next

Cancel

9. Following screen will be displayed. Click on Next.

Install New Application

Specify options for installing enterprise applications and modules.

[Step 1](#) Select installation options

→ **[Step 2: Map modules to servers](#)**

[Step 3](#) Provide options to perform the EJB Deploy

★ [Step 4](#) Provide JNDI Names for Beans

★ [Step 5](#) Map resource references to resources

★ [Step 6](#) Map resource env entry references to resources

[Step 7](#) Ensure all unprotected 2.x methods have the correct level of protection

[Step 8](#) Summary

Map modules to servers

Specify targets such as application servers or clusters of application servers where you want to install the application. The application can be installed on the same application server or dispersed among several application servers. Also, specify the target servers for requests to this application. The plug-in configuration file (plugin-cfg.xml) for each Web service is routed through it.

Clusters and Servers:

☒ ☐

Select	Module	URI	Server
<input type="checkbox"/>	ADOGL_EJB_FACADE_Bean.jar	ADOGL_EJB_FACADE_Bean.jar,META-INF/ejb-jar.xml	WebSphere:cell=cvrhp1455Node01Cell,node=cvrhp1455Node01,server=server1

Previous
Next
Cancel

10. Following screen will be displayed.

Select the database type as “ORACLE_V10G” from the drop down list and click on NEXT.

Install New Application

Specify options for installing enterprise applications and modules.

Step 1 Select installation options

Step 2 Map modules to servers

→ Step 3: Provide options to perform the EJB Deploy

Step 4 Provide JNDI Names for Beans

Step 5 Map resource references to resources

Step 6 Ensure all unprotected 2.x methods have the correct level of protection

Step 7 Summary

Provide options to perform the EJB Deploy

Specify the options to deploy enterprise beans.

EJB Deployment Options	Enable
Deploy EJB option - Class path	<input type="text"/>
Deploy EJB option - RMIC	<input type="text"/>
Deploy EJB option - Database type	ORACLE_V10G
Deploy EJB option - Database schema	<input type="text"/>

11. Following screen will be displayed.

Specify the JNDI name of the EJB Bean i.e. “ADOGL_EJB_FACADE_Bean” and click on NEXT.

Install New Application

?

Specify options for installing enterprise applications and modules.

Step 1 Select installation options

Step 2 Map modules to servers

Step 3 Provide options to perform the EJB Deploy

→ Step 4: Provide JNDI Names for Beans

★ Step 5 Map resource references to resources

★ Step 6 Map resource env entry references to resources

Step 7 Ensure all unprotected 2.x methods have the correct level of protection

Step 8 Summary

Provide JNDI Names for Beans

Each non-message-driven enterprise bean in your application or module must be bound to a Java Naming and Directory Interface (JNDI) name.

EJB module	EJB	URI	JNDI name
ADOGL_EJB_FACADE_Bean.jar	ADOGL_EJB_FACADE_Bean	ADOGL_EJB_FACADE_Bean.jar,META-INF/ejb-jar.xml	ADOGL_EJB_FACADE_Bea

Previous

Next

Cancel

12. Following screen will be displayed.

Specify the JNDI name for Resource Reference i.e. XAQueueConnectionFactory name and click on Next.

resource references to resources

Step 6 Map resource env entry references to resources

Step 7 Ensure all unprotected 2.x methods have the correct level of protection

Step 8 Summary

To modify Resource Authentication method (if Authorization type is 'container'):

- Select one or more checkboxes in the table
- Select either 'none', 'default', or 'custom login configuration'
 - if 'none' is selected:
 - Select one or more checkboxes in the table
 - if 'default' is selected:
 - select an authentication data entry from the dropdown menu
 - Click Apply
 - if 'custom login configuration' is selected:
 - select a custom login configuration from the dropdown menu
 - Click Apply
 - To edit the properties of the custom login configuration, click Mapping Properties in the table

Specify authentication method:

☐ none

☒ Use default method

☐ Use custom login configuration

Select authentication data entry

Select...

Select application login configuration

Select...

Apply

Select

Module

EJB

URI

Reference binding

JNDI name

<input checked="" type="checkbox"/>	ADOGL_EJB_FACADE_Bean.jar	ADOGL_EJB_FACADE_Bean	ADOGL_EJB_FACADE_Bean.jar,META-INF/ejb-jar.xml	MDBQCF	MDBQCF
-------------------------------------	---------------------------	-----------------------	--	--------	--------


Previous

Next

Cancel

13. Following screen will be displayed. Click Continue.

Application Resource Warnings


 ADMA8019E: The resources that are assigned to the application are beyond the deployment target scope. Resources are within the deployment target scope if they are defined at the cell, node, server, or application level when the deployment target is a server, or at the cell, cluster, or application level when the deployment target is a cluster. Assign resources that are within the deployment target scope of the application or confirm that these resources assignments are correct as specified.

Step 5 - Map resource references to resources resulted in the following resource warnings. If Application Resource Validation is set to false, you will not be able to continue past.

Module:
Name: ADOGL_EJB_FACADE_Bean.jar
URI: ADOGL_EJB_FACADE_Bean.jar,META-INF/ejb-jar.xml
Target: WebSphere:cell=cvrhp1455Node01Cell,node=cvrhp1455Node01,server=server1

Resource Reference:
Name: MDBQCF
Type: javax.jms.XAQueueConnectionFactory

Resource Assignment:
Name: MDBQCF
Scope: WebSphere:cell=cvrhp1455Node01Cell,node=cvrhp1455Node01,server=server1

 Type: JMSProvider
JNDI: MDBQCF

14. Following screen will be displayed.

- ✓ Type the JNDI name of the Queue i.e. MDB_QUEUE
- ✓ Select the Check box beside it
- ✓ Click on **Next**.

Install New Application

Specify options for installing enterprise applications and modules.

[Step 1](#) Select installation options

[Step 2](#) Map modules to servers

[Step 3](#) Provide options to perform the EJB Deploy

[Step 4](#) Provide JNDI Names for Beans

[Step 5](#) Map resource references to resources

→ **Step 6: Map resource env entry references to resources**

[Step 7](#) Ensure all unprotected 2.x methods have the correct level of protection

[Step 8](#) Summary

Map resource env entry references to resources

Each resource environment reference defined in your application must map to a resource.

☒ Apply Multiple Mappings

Select	Module	EJB	URI	Reference binding	JNDI name
<input checked="" type="checkbox"/>	ADOGL_EJB_FACADE_Bean.jar	ADOGL_EJB_FACADE_Bean	ADOGL_EJB_FACADE_Bean.jar,META-INF/ejb-jar.xml	MDB_QUEUE	MDB_QUEUE


Previous

Next

Cancel

15. Following screen will be displayed. Click on **Continue**.

Application Resource Warnings

 ADMA8019E: The resources that are assigned to the application are beyond the deployment target scope. Resources are within the deployment target scope if they are defined at the cell, node, server, or application level when the deployment target is a server, or at the cell, cluster, or application level when the deployment target is a cluster. Assign resources that are within the deployment target scope of the application or confirm that these resources assignments are correct as specified.

Step 6 - Map resource env entry references to resources resulted in the following resource warnings. If Application Resource Validation set to fail, you will not be able to continue past.

Module:

Name: ADOGL_EJB_FACADE_Bean.jar

URI: ADOGL_EJB_FACADE_Bean.jar,META-INF/ejb-jar.xml

Target: WebSphere:cell=cvrhp1455Node01Cell,node=cvrhp1455Node01,server=server1

Resource Reference:


Name: MDB_QUEUE

Type: null

Resource Assignment:

Name: MDB_QUEUE

Scope: WebSphere:cell=cvrhp1455Node01Cell,node=cvrhp1455Node01,server=server1

 Type: JMSProvider

JNDI: MDB_QUEUE

Continue

Cancel

16. Following screen will be displayed. Click on **Next**.

Enterprise Applications Close

Install New Application ?

Specify options for installing enterprise applications and modules.

Step 1 Select installation options

Step 2 Map modules to servers

Step 3 Provide options to perform the EJB Deploy

Step 4 Provide JNDI Names for Beans

Step 5 Map resource references to resources

Step 6 Map resource env entry references to resources

→ Step 7: Ensure all unprotected 2.x methods have the correct level of protection

Step 8 Summary

Ensure all unprotected 2.x methods have the correct level of protection

Specify whether you want to assign a security role to the unprotected method, add the method to the exclude list, or mark the method as unchecked.

☒ Uncheck

☐ Exclude

☐ Role:

Apply

Select	EJB module	URI	Protection type
<input type="checkbox"/>	ADOGL_EJB_FACADE_Bean.jar	ADOGL_EJB_FACADE_Bean.jar,META-INF/ejb-jar.xml	methodProtection.uncheck

Previous

Next

Cancel

17. Following screen will be displayed. Click on **Finish**.

[NOTE: This may take a few minutes.]

FLEXCUBE UBS Oracle GL Adapter - Installation Document

Page 16 of 22

ORACLE

Install New Application

?

Specify options for installing enterprise applications and modules.

Step 1 Select installation options

Step 2 Map modules to servers

Step 3 Provide options to perform the EJB Deploy

Step 4 Provide JNDI Names for Beans

Step 5 Map resource references to resources

Step 6 Map resource env entry references to resources

Step 7 Ensure all unprotected 2.x methods have the correct level of protection

→ Step 8: Summary

Summary

Summary of installation options

Options	Values
Use Binary Configuration	No
Deploy EJB option - Class path	
Create MBeans for resources	Yes
Cell/Node/Server	Click here
Reload interval in seconds	
Enable class reloading	No
Deploy EJB option - Database type	ORACLE_V10G
Deploy EJB option - Database schema	
Process embedded configuration	No
Application name	ADOGL_EJB_FACADE_Bean
Deploy EJB option - RMIC	
Validate Input off/warn/fail	warn
Directory to install application	
Distribute application	Yes
Deploy Web services	No
Pre-compile JSP	No
Deploy enterprise beans	Yes

Previous

Finish

Cancel

18.

19. Following screen will be displayed. Click on “Save to Master Configuration”.

Invoking RMIC.

Generating DDL

Writing output file

Shutting down workbench.

EJBDeploy complete.

0 Errors, 0 Warnings, 0 Informational Messages

ADMA5007I: The EJBDeploy command completed on D:\Program Files\IBM\WebSphere\AppServer\profiles/default\wstemp\app_10b6b6eefda\dpl\dpl_ADOGL_EJB_FACADE_Bean.ear

ADMA5005I: The application ADOGL_EJB_FACADE_Bean is configured in the WebSphere Application Server repository.

ADMA5053I: The library references for the installed optional package are created.

ADMA5005I: The application ADOGL_EJB_FACADE_Bean is configured in the WebSphere Application Server repository.

ADMA5001I: The application binaries are saved in D:\Program Files\IBM\WebSphere\AppServer\profiles/default\wstemp\1134867395\workspace\cells\cvrhp1455Node01 Cell\applications\ADOGL_EJB_FACADE_Bean.ear\ADOGL_EJB_FACADE_Bean.ear

ADMA5005I: The application ADOGL_EJB_FACADE_Bean is configured in the WebSphere Application Server repository.

SECJ0400I: Successfully updated the application ADOGL_EJB_FACADE_Bean with the appContextIDForSecurity information.

ADMA5011I: The cleanup of the temp directory for application ADOGL_EJB_FACADE_Bean is complete.

ADMA5013I: Application ADOGL_EJB_FACADE_Bean installed successfully.

Application ADOGL_EJB_FACADE_Bean installed successfully.

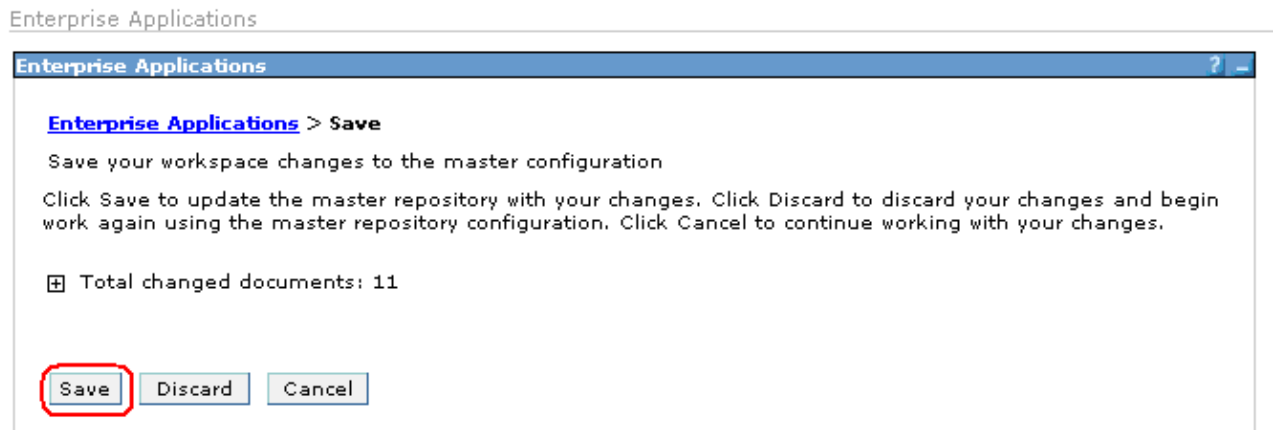
To start the application, first save changes to the master configuration.

Save to Master Configuration

To work with installed applications, click the "Manage Applications" button.

Manage Applications

20. Following screen will be displayed. Click on Save.



21. Browse to Application -> Enterprise Applications.

- ✓ The deployed ADOGL_EJB_FACADE_Bean will be displayed on the screen.
- ✓ Click the check box beside it and click on **Start**.

The screenshot shows the Oracle Enterprise Applications management interface. On the left, a navigation pane lists various system components, with 'Enterprise Applications' selected. The main area, titled 'Enterprise Applications', displays a table of installed applications. The first application, 'ADOGL_EJB_FACADE_Bean', is highlighted with a red box around its selection checkbox. Above the table, a toolbar contains several action buttons, with 'Start' also highlighted by a red box. The table lists other applications like 'AQBridgeFacade', 'GW_EJB_Bean', 'GW_HTTP_Servlet', 'GW_NOTIFY_MDB_Bean', and 'GW_NOTIFY_TIMER_Bean', all with green status icons. A 'Total 6' summary is shown at the bottom of the table.

Select	Name	Status
<input checked="" type="checkbox"/>	ADOGL_EJB_FACADE_Bean	✖
<input type="checkbox"/>	AQBridgeFacade	➡
<input type="checkbox"/>	GW_EJB_Bean	➡
<input type="checkbox"/>	GW_HTTP_Servlet	➡
<input type="checkbox"/>	GW_NOTIFY_MDB_Bean	➡
<input type="checkbox"/>	GW_NOTIFY_TIMER_Bean	➡

Total 6

22. Following screen will be displayed with a green arrow as the status indicating that the deployed ADOGL_EJB_FACADE_Bean is running.

Enterprise Applications

Messages

Application ADOGL_EJB_FACADE_Bean on server server1 and node cvrhp1455Node01 started successfully.

Enterprise Applications

Lists installed applications. A single application can be deployed onto multiple servers.

Preferences

Start

Stop

Install

Uninstall

Update

Rollout Update

Remove File

Export

Export DDL

Select	Name	Status
<input type="checkbox"/>	ADOGL_EJB_FACADE_Bean	
<input type="checkbox"/>	AQBridgeFacade	
<input type="checkbox"/>	GW_EJB_Bean	
<input type="checkbox"/>	GW_HTTP_Servlet	
<input type="checkbox"/>	GW_NOTIFY_MDB_Bean	
<input type="checkbox"/>	GW_NOTIFY_TIMER_Bean	

Total 6



FLEXCUBE UBS Oracle GL EJB Adapter Installation
[May] [2020]
Version 12.87.06.0.0

Oracle Financial Services Software Limited
Oracle Park
Off Western Express Highway
Goregaon (East)
Mumbai, Maharashtra 400 063
India

Worldwide Inquiries:
Phone: +91 22 6718 3000
Fax: +91 22 6718 3001
www.oracle.com/financialservices/

Copyright © [2007], [2020], Oracle and/or its affiliates. All rights reserved.

Oracle and Java are registered trademarks of Oracle and/or its affiliates. Other names may be trademarks of their respective owners.

U.S. GOVERNMENT END USERS: Oracle programs, including any operating system, integrated software, any programs installed on the hardware, and/or documentation, delivered to U.S. Government end users are "commercial computer software" pursuant to the applicable Federal Acquisition Regulation and agency-specific supplemental regulations. As such, use, duplication, disclosure, modification, and adaptation of the programs, including any operating system, integrated software, any programs installed on the hardware, and/or documentation, shall be subject to license terms and license restrictions applicable to the programs. No other rights are granted to the U.S. Government.

This software or hardware is developed for general use in a variety of information management applications. It is not developed or intended for use in any inherently dangerous applications, including applications that may create a risk of personal injury. If you use this software or hardware in dangerous applications, then you shall be responsible to take all appropriate failsafe, backup, redundancy, and other measures to ensure its safe use. Oracle Corporation and its affiliates disclaim any liability for any damages caused by use of this software or hardware in dangerous applications.

This software and related documentation are provided under a license agreement containing restrictions on use and disclosure and are protected by intellectual property laws. Except as expressly permitted in your license agreement or allowed by law, you may not use, copy, reproduce, translate, broadcast, modify, license, transmit, distribute, exhibit, perform, publish or display any part, in any form, or by any means. Reverse engineering, disassembly, or decompilation of this software, unless required by law for interoperability, is prohibited.

The information contained herein is subject to change without notice and is not warranted to be error-free. If you find any errors, please report them to us in writing.

This software or hardware and documentation may provide access to or information on content, products and services from third parties. Oracle Corporation and its affiliates are not responsible for and expressly disclaim all warranties of any kind with respect to third-party content, products, and services. Oracle Corporation and its affiliates will not be responsible for any loss, costs, or damages incurred due to your access to or use of third-party content, products, or services.